



User Manual for

# **RESOLVE**

## **Linear power supply**

Version 2.0 (May 2021)



## Chapter 1 - The Phædrus Audio equipment power supplies

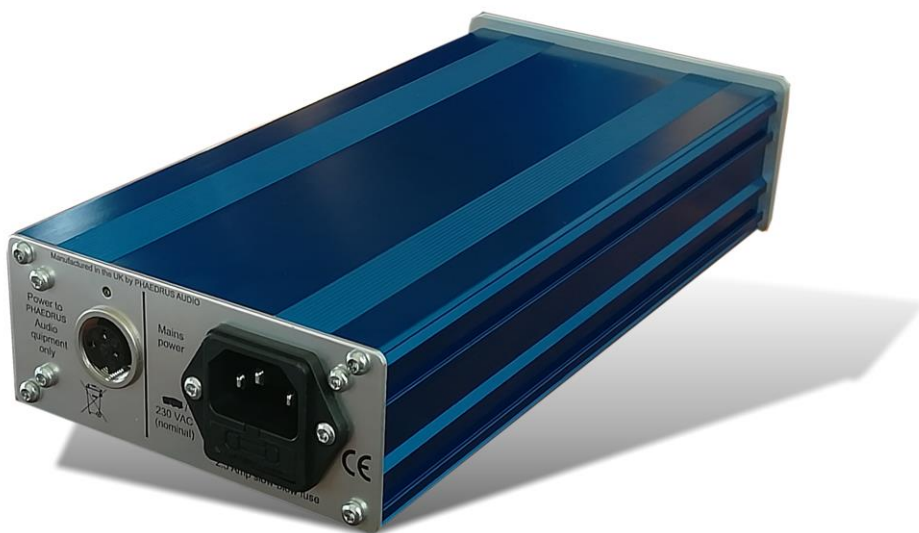
All Phædrus Audio equipment require a high-quality, external power-supplies. The hi-fi/archiving **Groove Sleuth preamplifiers** (of all types); the **ADAMANTINE preamplifier**; and the **FRANCINSTIEN WARP** product all require 12V DC power.

The external power supplies are manufactured with the highest audio-quality in mind and ensure that the power provided to the preamplifier is very low noise and very low impedance. All PSUs connect to the preamplifiers unit via a cable with screw-lock connectors.

There are two options of PSU to power this equipment:

- The basic PSU is an external, high-quality, universal power-supply unit (**GS-PSU**). These are supplied with the unit.
- The external power supply may be upgraded to the **GS-RESOLVE-PSU**.

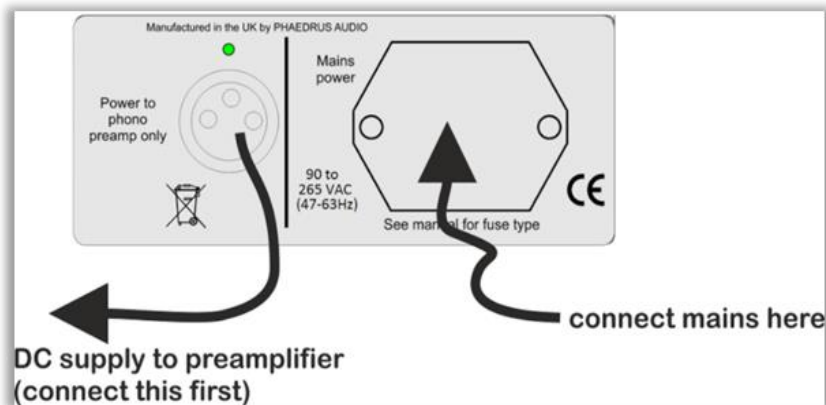
### RESOLVE Power Supply



Housed in an identical chassis to the preamplifiers, the **RESOLVE** power supply is a linear supply and of the very highest audio quality (see Chapter 3 - Specification).

Because the RESOLVE power supply is linear, it is NOT UNIVERSAL, so different options must be selected for mains power/power-grid voltages with nominal values 230V AC or 110V AC.

## Chapter 2 - Connecting the GS-RESOLVE-PSU and the preamplifier



The PSU and preamplifier should be connected **BEFORE** mains is applied to the PSU unit. It is not dangerous or harmful to the equipment, but it is better never to

disconnect the preamplifier and PSU whilst this link is live.

**Phædrus Audio** equipment is designed to be compatible with European Eco-Consumption directives. The unit and its power supply are intended to remain energised all the time. The design is thereby compatible with the best audio practice of leaving the unit energised all the time whilst respecting the environment, and your electricity bill!

### Voltage setting & Fuse replacement

The **RESOLVE** PSU is a linear type supply and is internally set to be 110V ( $\pm 10\%$ ) AC or 230V ( $\pm 10\%$ ) AC. ***The correct voltage type must be used according to the mains supply available.*** If in doubt, consult Phædrus Audio. The RESOLVE power supply should be fitted with a 5 × 20mm, 2 Amp, SLOWBLOW glass fuse.

## Chapter 3 - Specifications

### Groove Sleuth RESOLVE power supply (GS-RESOLVE-PSU)

**Size:** GS-1: 112 × 50 × 225 mm (W-H-L); GS-MINI: 112 × 50 × 85 mm

**Preamplifier Supply:** DC output on screw locking connector.

**Power consumption:** Compatible with European Eco-Consumption directives. The unit is intended to remain energised all the time.

**Power input:** Mains power (power grid supply) 230V nominal or 110V nominal (order option)

**Insulation:** Class 1 equipment, case of PSU is earthed. DC supply is double-insulated and fully floating from mains earth.

**Regulation:** 3mV over standard mains voltage variation

**Output impedance:** <10mΩ

**Maximum current impulse :** 1 Amp

**Noise:** 10μV

**Protection:** Over-current, thermal and SOA protection.

*Phædrus Audio reserves the right to change specifications without notice.*

## Chapter 4 - Warranty and service

### Service

If you experience a problem with a Phædrus Audio product, contact [support@phaedrus-audio.com](mailto:support@phaedrus-audio.com). We will diagnose the problem remotely and advise you of the warranty status. If a repair or replacement is required, we will issue a Return Merchandise Authorization (RMA) number and tell you where to send the unit to be repaired. You MUST have an RMA number before you return the equipment to Phædrus Audio's support service. Phædrus Audio will not accept responsibility for loss or damage in shipping or for equipment returned without valid paperwork and/or a valid RMA number. Remember, warranty is void if product serial numbers have been removed or altered, or if the product has been damaged by abuse, accident or unauthorized modification and/or repair (see Phædrus Audio Limited Warranty for details). There are no user serviceable parts inside.

PLEASE RETAIN YOUR SALES RECEIPT. IT IS YOUR PROOF OF PURCHASE COVERING YOUR LIMITED WARRANTY. LIMITED WARRANTY IS VOID WITHOUT SUCH PROOF OF PURCHASE.

### Phædrus Audio's Limited Warranty

This limited warranty is valid only if you purchased the product from Phædrus Audio or from a Phædrus Audio authorized dealer in the country of purchase. Phædrus Audio warrants that the equipment it manufactures shall be free from defects in material and workmanship for a period of one (1) year from the original date of purchase; unless a longer minimum warranty period is mandated by applicable local laws. If equipment fails due to such defects within this period, Phædrus Audio will, at its option, repair or provide a replacement for the defective part or product. This warranty does not extend to any Phædrus Audio product that has been damaged or rendered defective as a result of: accident, misuse, or abuse; or by the use of parts not manufactured or supplied by Phædrus Audio; or by unauthorized modification or attempted repair to the product; or by acts of God/Nature (accident, fire, flood, etc.) or any other condition that is beyond the control of Phædrus Audio. There are no user serviceable parts inside. This limited warranty is invalid if the factory-applied serial number has been altered or removed from the product. This limited warranty is extended exclusively to the original buyer (customer of Phædrus Audio, or authorized retail dealer) and is not transferable to anyone who may subsequently purchase the product. No other person or organisation shall be entitled to give any warranty promise on behalf of Phædrus Audio. Phædrus Audio makes no other warranties, expressed or implied, of merchantability, fitness for a particular purpose or otherwise. Phædrus Audio liability is limited to repair or replacement by Phædrus Audio, at its sole discretion and, in no event, will Phædrus Audio be liable for any direct, indirect, special, incremental or consequential damages resulting from any defect in the product, including lost profits, damage to property and, to the extent permitted by law, damage for personal injury, even if Phædrus Audio has been advised of the possibilities of such damages. For any hardware defects experienced by the customer while the product is under

warranty, Phædrus Audio will incur the shipping cost to the customer and the customer is responsible for the shipping costs to Phædrus Audio designated after-sales service office.

***Warranty service conditions are subject to change without notice. For the latest warranty terms and conditions and additional information regarding Phædrus Audio limited warranty, please see complete details online at [www.phaedrus-audio.com](http://www.phaedrus-audio.com).***

## Appendices

### Appendix 3 - Declaration of Conformity

The Manufacturer of the Products covered by this Declaration is

**Phædrus Audio  
Maidstone  
Kent  
UK**

The directives covered by this declaration are:

**89/336/EEC Electromagnetic Compatibility directive  
73/23/EEC Low Voltage Equipment directive**

The products covered by this declaration are:

**Groove Sleuth non-equalising phono preamplifiers**

The basis on which conformity is being declared: The manufacturer hereby declares that the products identified above comply with the protection requirements of the EMC directive and with the principal elements of the safety objectives of the Low Voltage Equipment directive, and that the following standards have been applied:

**IEC INTERNATIONAL STANDARD 60065 - Audio, video and similar electronic apparatus - Safety requirements**

The technical documentation required to demonstrate that the products meet the requirements of the Low Voltage Equipment directive has been compiled and is available for inspection by the relevant enforcement authorities. The CE mark was first applied in 2015.

Signed:



**Richard Brice, Technical Director  
Date: January 2021**